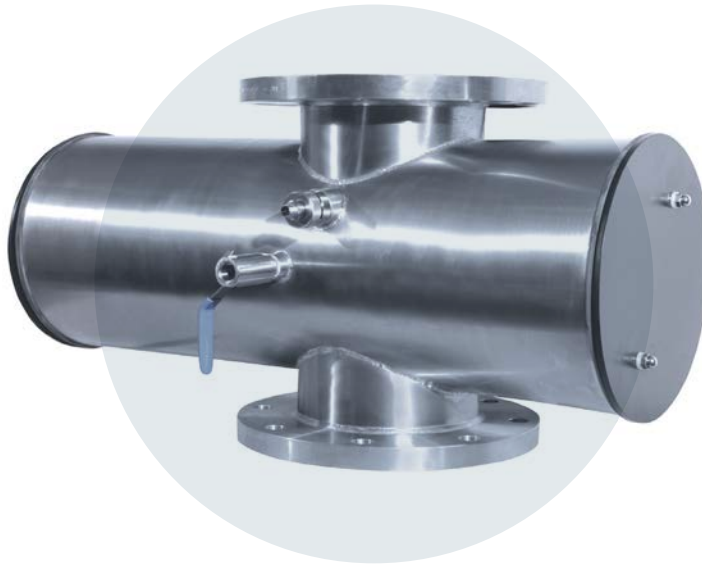


We UVCare...



PROLINE WW IL

Application Optimized UV for Waste Water



UV treatment for Waste Water

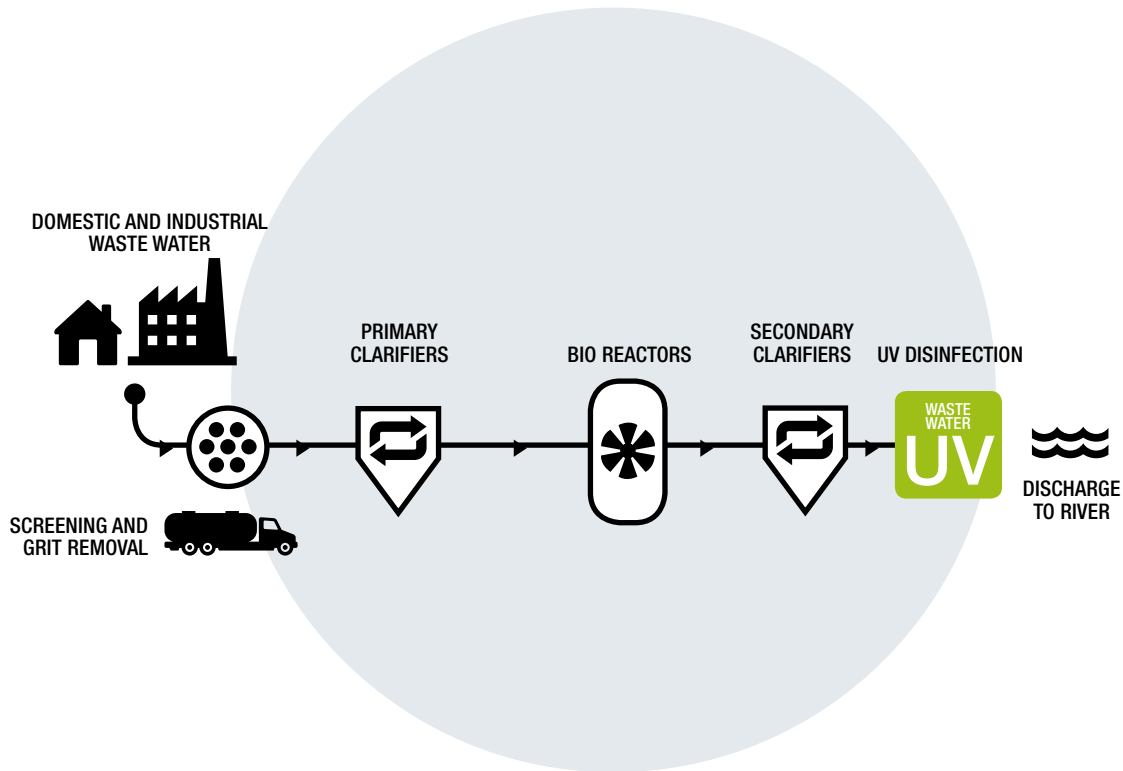
Our ProLine WW IL systems for UV treatment of waste water are particularly suited to low UVT applications and can be deployed after non filtered applications, traditional secondary treatment and membranes. With increasing urbanisation and water stress the need for tertiary treatment and disinfection of waste water is growing, particularly for discharge to sensitive environments. UV is also growing in popularity as it provides a proven alternative to Chlorination avoiding the generation of potentially harmful by-products. The ProLine WW IL are compact medium pressure lamp systems and are intended as a cost-effective treatment for less critical applications where there is no risk to people or the food chain. For more critical applications we recommend our reuse range.

berson

hanovia

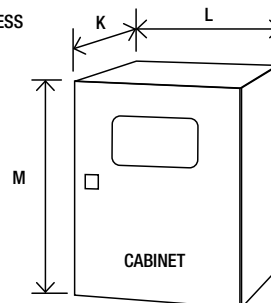
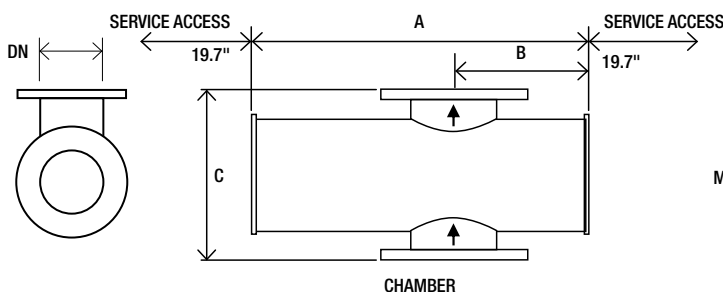
aquionics

ProLine WW IL™ waste water treatment plant process



KEY FEATURES	WHAT IT GIVES YOU	BENEFITS FOR YOU
INTELLIGENCE		
Dry DVGW approved UV sensor measuring germicidal wavelengths	Continuous verification of performance with real time dose reading and in-built low dose warning	Easy to monitor
Flow meter input	Dose reading based on actual flow conditions when meter is connected	Accurate UV dose reading guaranteed under wide range of operating conditions
OPTIMIZATION		
UV waste water disinfection	Protects the environment from harmful microbiological contamination	No chemicals
Designed for municipal and industrial reuse and waste water applications	Flanged connections, high standard internal finish	Designed to international standards
	Automatic wiper (quartz cleaning)	Self cleaning to maintain performance
	*Ultrawipe (chemically enhanced wiper)	Clean quartz sleeves despite high fouling potential
INTEGRATION		
Compact design	Can be retrofitted to existing process	Easy integration

* Option



* Allow dimension L in front of cabinet for door opening and panel access.
 ** M dimension includes the space for the cabinet mounting brackets but you need to allow space below the cabinet for cable entry and access (minimum of 9.8").
 *** CC: Control cabinet, PC: Power cabinet
 a Attention: the optional cabinet with A/C is bigger. Ask for dimensions.
 All dimensions are approximate for clearance purposes only. We have a policy of continuous product development, exact drawings are available on request.
 All specifications are subject to change without notification. Your distributor or our account manager can advise on correct sizing and specification requirements.

			Dimensions (Inches)								Approx weight (Kg)	
			Chamber				Cab.	Cabinet (fan cooled)			Chamber	Cabinet
Model Number	Max Power (kW)	No of lamps	A	B	C	DN	No***	K*	L	M**	Empty	Fan Kg/pc
ProLine WW IL 100	1.8	2	30.7	12.2	15.7	4	1	11.8	31.5	39.4	92.6	110.2
ProLine WW IL 250	5.6	2	30.7	12.2	21.3	6	1	11.8	39.4	47.3	121.3	176.4
ProLine WW IL 400	11	4	30.7	12.2	18.3	6	1	11.8	39.4	47.3	121.3	220.5
ProLine WW IL 1000	11	4	30.7	12.2	23.6	8	1	11.8	39.4	47.3	176.4	220.5
ProLine WW IL 1250	16.5	6	30.7	12.2	23.6	8	1	15.7	47.2	47.3	176.4	363.8
ProLine WW IL 4500	26	6	35.3	14.5	31.5	14	1	23.6	39.4	82.7	374.8	441
ProLine WW IL 5000	35	8	35.3	14.5	31.5	14	1	23.6	47.2	82.7	374.8	507
ProLine WW IL 7500	52	12	35.3	14.5	31.5	14	1 CC	15.7	23.6	78.7	374.8	286.6
							1 PC	23.6	47.2	82.7		683.4
ProLine WW IL 14000	52	8	41.4	17.6	35.4	20	1 CC	15.7	23.6	78.7	573.2	286.6
							1 PC	23.6	47.2	82.7		639.3
ProLine WW IL 15000	52	12	41.4	17.6	35.4	20	1 CC	15.7	23.6	78.7	573.2	286.6
							1 PC	23.6	47.2	82.7		683.4
ProLine WW IL 16000	78	12	41.4	17.6	35.4	20	1 CC	15.7	23.6	78.7	573.2	286.6
							2 PC	23.6	47.2	82.7		573.2
ProLine WW IL 18000	117	18	41.4	17.6	35.4	20	1 CC	23.6	39.4	79.1	595.2	286.6
							3 PC	23.6	47.2	82.7		573.2

UV CHAMBER	
Material:	StSt 316L / 1.4404
Internal finish:	< 0.8 µm Ra, welds as laid, electropolished and passivated
External finish:	Brushed to K280, electropolished and passivated
Process (mating) connections:	ANSI 150#
Drain connection:	BSP Socket
Degree of protection:	IP54 equivalent to NEMA 12
Wiper:	Automatic (electrically driven)
UV Lamp:	Medium pressure
Quartz Sleeve:	Pure quartz
Number of lamps:	See table above
Expected lamp life:	10,000 hours
Temperature sensor:	Yes
UV sensor:	Dry DVGW compliant UV sensor (one per UV chamber)
Working fluid temperature:	33.8°F to 140°F
Hydrostatically pressure tested:	Yes
Chamber mounting:	Flow horizontal or vertical (lamps horizontal only)
Operating pressure:	Higher pressure available upon request
Seals:	EPDM, ADI free, EC 1935/2004, FDA 21 CFR 177.2600 approved

OPTIONS	
Document Support Pack	
Cabinet material: Stainless steel 304	
Operation and Maintenance manual and printed Installation and Commissioning manual in Chinese, English, French, German & Spanish	
Flange options: ANSI 150, JIS, Table 'E'	
Lead length: 65.6 ft and 95.1 ft	
In-field UV reference sensor kit	
Bleed: valve with BSP connection	
Operating pressure: Higher pressure available upon request	
Ultrawipe (for WW IL 250-18000)	
Control cabinet: Air conditioning in carbon steel or stainless steel raises control ambient limit to 122°F (in shade) IP rating 65 (NEMA 4 or 4X)	
Allen Bradley AB850 & UV Touch HMI	
Water level sensor: Full water detection UV chamber	
Water leak detection: Detects water leaks from quartz sleeve	

CABINET	
Material:	Polyester coated carbon steel, RAL 7035
Degree of protection:	IP54 (NEMA 12)
Supply voltages:	WW IL 100-1250: 200-277 V (2ph L1,L2 or 1ph L1+N) WW IL 4500 - 18000: 400-480 V (3ph L1, L2, L3) 50/60 Hz (voltage tolerance ±10% of nominal)
Operating temperature range:	41°F to 95°F
Relative humidity:	<95% non-condensing
Cooling fans:	Yes
Interconnecting cable:	32.8 ft
Variable power:	Variable power, 70% reduction from maximum ballast power (not on IL 100+)

HMI / CONTROL	
Display:	2 Line LCD, indicating system status including general alarms
Operating menu:	3 levels (2 with password protection)
Fault finding:	Event log

CUSTOMER OUTPUTS	
4-20 mA passive output:	UV dose, ballast power
VFC outputs:	Any trip, any warning, UV dose failure, system ready, wiper failure, lamp failure, water leak.

CUSTOMER INPUTS	
4-20 mA active or passive inputs:	Flow meter
VFC inputs:	Remote stop/start, remote clear message, remote wipe, remote set power high

CUSTOMER COMMUNICATIONS PORT	
Modbus RS 485 serial RTU for SCADA connection	

APPROVALS	
UL 508A , CE marked,	



PROLINE WW IL

Also available in our Waste Water product range...



PROLINE PQ WW AL

Range of amalgam products
with NWRI validation for waste
water reuse



PROLINE PQ WW IL

Range of medium pressure
products with NWRI validation
for waste water reuse



berson



hanovia



aquionics

www.weuvcare.com

BERSON, HANOVIA & AQUIONICS WORKING TOGETHER AS PART OF THE HALMA GROUP.

Netherlands

t: +31 40 2907777
e: sales@bersonuv.com

China

t: +86 21 61679599
e: china@hanovia.com

USA

t: +1 980 256 5700
e: sales@aquionics.com

Germany

t: +49 611 44575375
e: verkauf@hanovia.com

Malaysia

t: +60 16 440 8834
e: asia@hanovia.com

Canada

t: +1 980.256.5700
e: sales@aquionics.com

United Kingdom

t: +44 1753 515300
e: sales@hanovia.com

Mexico

t: +1 980.256.5700
e: sales@aquionics.com



A **Halma** company